

SETTING A HIGHER STANDARD



ROOF ACCESSORY SYSTEMS

snowRETENTION

solarMOUNTING

roofFLASHING

SNOWRETENTION

- **Online snow bracket™ estimator**
Generates JOB SPECIFIC 3 part specs, layouts, and quotes
- Available for nearly every sloped roof type
- Easy to Install
- Non-penetrating standing seam systems
- FREE Manufactured-approved designs!
- Products manufactured from recycled materials
- Custom designs available to meet stringent specifications
- Manufactured in the USA



For your **FREE Manufacturer-approved Design**, visit our online snow bracket estimator www.snowbracketestimator.com



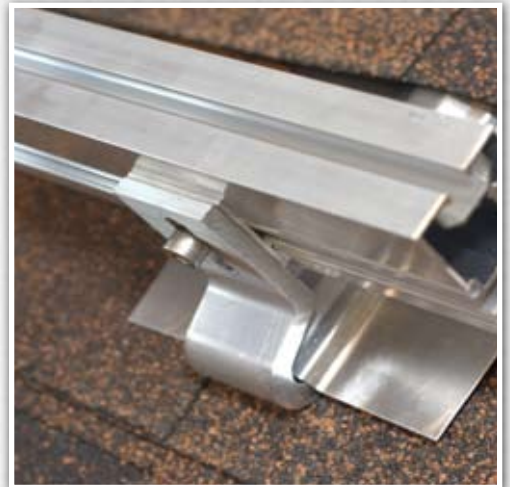
- **Online solar mounting estimator**
This tool makes specifying your jobs a snap by giving you FREE construction drawings/details, price quotes, a parts list, and an engineering report.

Want an Engineer stamped design? **Engineering service available!**

One tool installations

No more carrying a full tool belt around when installing our mounting systems. All you need is a 6mm Allen Wrench.

- **Innovative system solutions**
We offer various innovative system solutions for any and all solar mounting applications.



roofFLASHING

- Highly durable and weather resistant
- Maximum formability and long term functionality
- Fully recyclable
- Fire resistant
- **Energy Efficient**
FlexVent™ offers 10 sq. in. of net free air flow per lin. ft.
- Quick & Easy installation
- Butyl adhesive attachment
- Competitively priced
- **FlexVent™** is ICC Approved
#ESR-1787



SETTING A HIGHER STANDARD

SNOWRETENTION

Snow Brackets™ Snow Guards

Deck Mount Snow Fence

Clamp On Snow Fence

SETTING A HIGHER STANDARD



Snow Retention Systems

Strong, safe and reliable. Our SNOW RETENTION line creates the ideal solution to protect people and property by using tested products and a fully engineered system.

AVAILABLE FOR NEARLY EVERY SLOPED ROOF TYPE



Our snow retention product line saves property owners money and limits the possibility of personal loss. With our products, you can:

- **Prevent danger** to residents and guests.
- **Prevent** costly roof and **property damage**.
- **Prevent limited access** due to snow and ice blockage.
- **Promote energy efficiency** by retaining snow to serve as an insulating blanket.
- Trust in the best with the **highest quality snow retention devices**.

solarMOUNTING

Solar Mounting Systems

CONNECTING TO ENERGY



Solar Mounting Systems

Built to last. Built to be reliable. Each and every component in our MAGE TEGRA line creates a perfect foundation for your solar systems.

- Precise online project calculator that provides estimated cost, layout drawing, and engineering report for your mounting system, find it at www.solarmountestimator.com
- Highly weatherproof + water-tight = roof warranty is maintained
- A proprietary worksheet to determine the best system for you
- ISO-controlled production and comprehensive quality control
- Patented fastener systems only require one tool and are easy and safe to install
- Components are recyclable
- Customized solutions based on your needs
- Free itemized quotes
- Innovative system solutions for any solar mounting application



roofFLASHING

Roof Ventilation

Roof Flashing

COOL ENERGY



Roof Ventilation

TRA-Mage's Cool Roof Ventilation Systems offer many benefits and **energy efficient savings**. According to a study done by Oakridge National Laboratory, "...Venting caused a significant **50% reduction** in the heat penetrating the conditioned space compared to the direct-nailed asphalt shingle roof that is in direct contact with the roof deck."

William A. Miller, Ph.D.

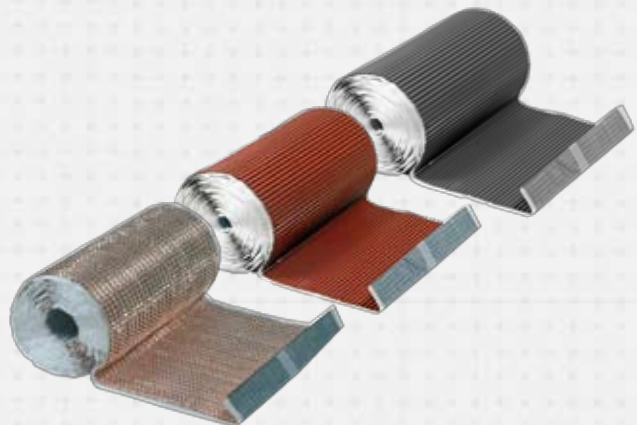
Buildings Technology Center, Oak Ridge National Laboratory

Study Cited: Steep-slope Assembly Testing of Clay and Concrete Tile with and without Cool Pigmented Colors - October 2005

Roof Flashing

Considered to be the roofer's duct tape for walls, chimneys, trim junctions, valleys and more.

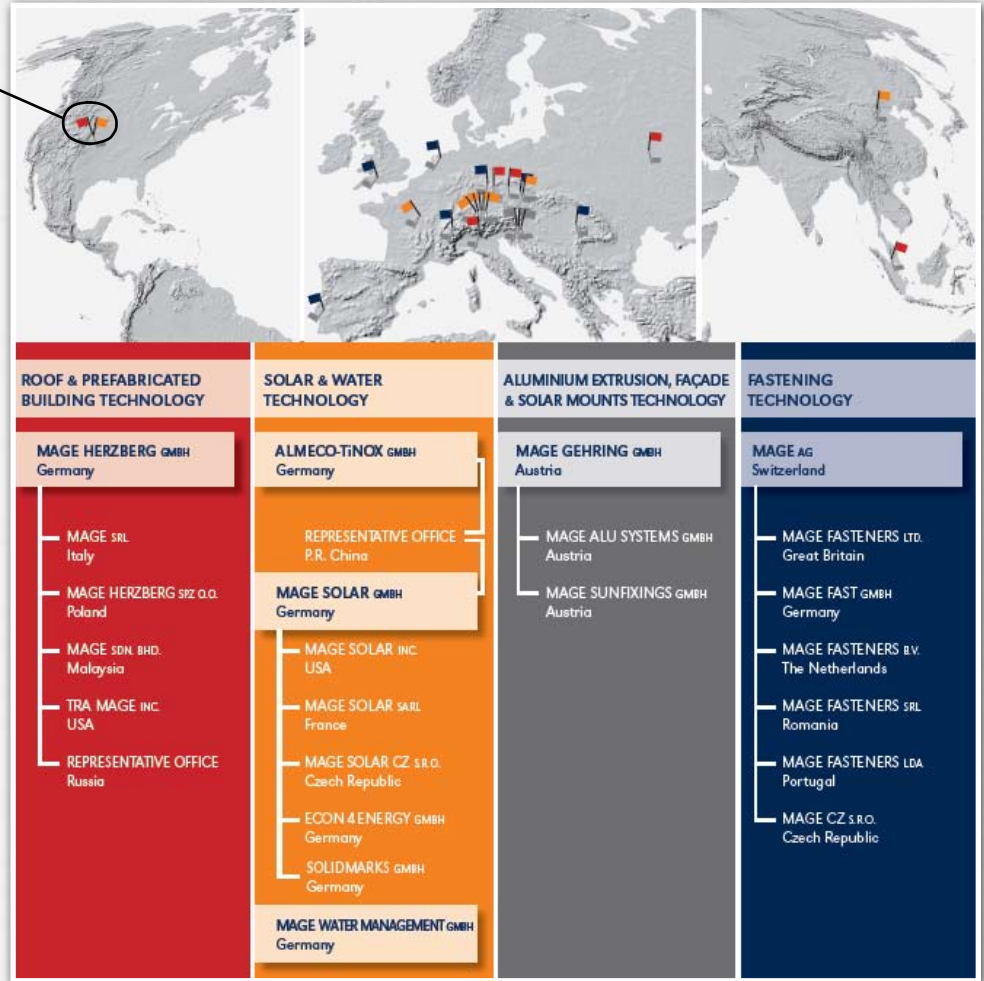
FlexFlash™ is made of continuous corrugated aluminum or copper and is available with several color coating. The back side is fully coated with butyl adhesive.



SETTING A HIGHER STANDARD



The MAGE Industrie Holding AG combines expertise in the area of renewable energies with high-quality roofing engineering and innovative fastening and mounting solutions. The TRA-MAGE company- as a member of the MAGE GROUP - consistently implements these synergies in the roofing, photovoltaic and solar thermal sectors.



As a specialized manufacturer of high quality roofing accessories, TRA-MAGE has long been actively engaged in optimizing roof protection by developing products with durable and effective performance in extreme conditions.

Visit our website to learn more about our products or call our experienced team of experts. We are there to support you in the planning and development of all your projects.

TRA-MAGE, Inc.

1657 South 580 East | American Fork, UT 84003 | USA
 Tel: 800-606-8980 | Fax: 801-756-7891
 info@tra-mage.com | www.tra-mage.com